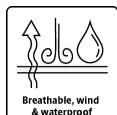
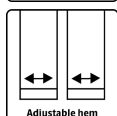
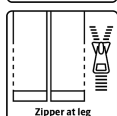
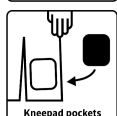
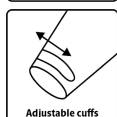
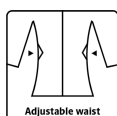


# ALLROUND WINTER

## WOMAN COVERALL IN POLYESTER QUALITY

LR3033



### Breathable, waterproof and taped seams

Waterproof:  $\geq 13.000$  MM  
Breathability: 6.000g/m<sup>2</sup>/24h

### Colours and sizes

13 Purple / 07 Black      XXS - 3XL



GB

### Women's Winter Coverall in strong quality

100% Polyester with TPU Membrane, 200 g/m<sup>2</sup>

Lining: 100% Polyester with 140 g/m<sup>2</sup> PES padding

- Wintercoverall shaped for women
- Fixed hood with elastic drawstring
- Hidden two-way zipper with velcro closure
- Knitted storm cuffs in sleeves
- Adjustable and elasticated sleeves with velcro
- Elasticated adjustments at waist
- Underarm zipper for ventilation
- Detachable inside braces
- Belt straps and belt
- Hidden chest pocket with zipper
- Two side pockets with zipper
- One inside chest pocket
- Pocket on thigh with zipper
- Reinforcement on the back and knees
- Double kneepad pockets
- Hidden two-way zipper on the side of the legs
- Velcro adjustments at ankles
- Reflective details

### Care instructions



Do not use any softeners  
Do not use bleach  
Wash with similar colours  
Ensure the zipper is fastened  
Dry inside out

LYNGSØ  
RAINWEAR