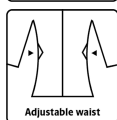
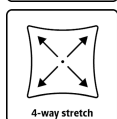


# ALLROUND WINTER

## WOMAN JUMPSUIT IN STRETCHABLE QUALITY

F1073



**Breathable, wind and waterproof with taped seams**

Waterproof: >20.000 MM  
Breathability: 8.000g/m<sup>2</sup>/24h

### Colours and sizes

07 Black	XS - 3XL
08 Green	XS - 3XL



**GB**

### Women's Winter Jumpsuit in lightweight and stretchable quality

92% PES, 8% Elastane with TPU Membrane, 175 g/m<sup>2</sup>  
(Water Repellent treatment with BIONIC-FINISH@ECO)  
Lining: 210T Taffeta with 140 g/m<sup>2</sup> PES padding

- Fixed hood with drawstring
- Hidden two-way zipper with velcro closure
- Elastic storm cuffs in sleeves
- Drawstring at waist
- Detachable snackbag
- One chest pocket with zipper
- Two side pockets with zipper
- One inside chest pocket
- Elasticated ankles
- Hidden and foldable reflexes at sleeves and legs

### Care instructions



Do not use any softeners  
Do not use bleach  
Wash with similar colours  
Ensure the zipper is fastened  
Dry inside out

**LYNGSØE**  
**RAINWEAR**