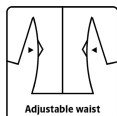


# ALLROUND WINTER COVERALL IN NYLON QUALITY

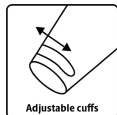
LR7033



Breathable, wind & waterproof



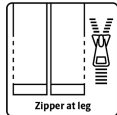
Adjustable waist



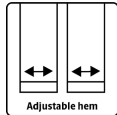
Adjustable cuffs



Kneepad pockets



Zipper at leg



Adjustable hem



DURABLE  
VERSATILE  
RELIABLE

CORDURA



**Breathable, wind and  
waterproof with taped seams**

Waterproof:  $\geq 8.000$  MM  
Breathability:  $3.000\text{g}/\text{m}^2/24\text{h}$

### Colours and sizes

07 Black	XXS - 8XL
02 Red / 07 Black	XXS - 8XL
06 Grey / 07 Black	XXS - 8XL



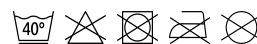
GB

### Winter Coverall in lightweight materials with great comfort

210D Nylon Oxford with PU Coating,  $170\text{g}/\text{m}^2$   
Lining: 100% Polyester with  $160\text{g}/\text{m}^2$  PES padding

- Detachable hood with zipper and elastic drawstring
- Hidden two-way zipper with velcro closure
- Sleeves and ankles with velcro adjustments
- Knitted storm cuffs in sleeves
- Elasticated lower back
- Elasticated adjustments at waist
- Underarm zipper for ventilation
- Two chest pockets with velcro (extra pocket with zipper on both pockets)
- Hidden chest pocket with zipper
- Two side pockets with velcro
- Inside chest pocket with zipper
- Two back pockets with velcro
- Tool pocket on right thigh
- Cordura Kneepad pockets
- Hidden two-way zipper on the side of the legs
- Reflective details

### Care instructions



Do not use any softeners  
Do not use bleach  
Wash with similar colours  
Ensure the zipper is fastened  
Dry inside out

**LYNGSØ  
RAINWEAR**