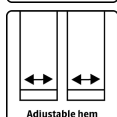
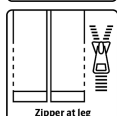
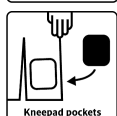
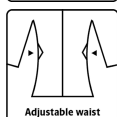


ALLROUND WINTER COVERALL IN POLYESTER QUALITY

LR4033



Breathable, waterproof and taped seams

Waterproof: ≥ 13.000 MM
Breathability: $6.000\text{g/m}^2/24\text{h}$

Colours and sizes

14 Olive / 07 Black XXS - 5XL



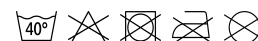
GB

Winter Coverall in strong quality

100% Polyester with TPU Membrane, 200 g/m^2
Lining: 100% Polyester with 140 g/m^2 PES padding

- Detachable hood with zipper and elastic drawstring
- Hidden two-way zipper with velcro closure
- Adjustable and elasticated sleeves with velcro
- Knitted storm cuffs in sleeves
- Elasticated adjustments at waist
- Underarm zipper for ventilation
- Detachable inside braces
- Belt straps and belt
- Hidden chest pocket with zipper
- Two side pockets with zipper
- One inside chest pocket
- Pocket on thigh with zipper
- Reinforcement on the back and knees
- Double kneepad pockets
- Hidden two-way zipper on the side of the legs
- Velcro adjustments at ankles
- Reflective details

Care instructions



Do not use any softeners
Do not use bleach
Wash with similar colours
Ensure the zipper is fastened
Dry inside out

**LYNGSØ
RAINWEAR**